

LEATHER MAGIC REPAIR INSTRUCTIONS

Thank you for purchasing the Leather Magic leather repair kit. We know that you will be completely happy and amazed with the results of the repairs that you are now able to make with this kit. The materials contained in this kit will enable you to make permanent cosmetic repairs to almost any type of leather, however, it is not recommended for use on suede or brushed leather since it is impossible to duplicate the finish of this type of leather. A repair may be made to this type of leather, but be aware that the finished repair will be very visible and will not match the brushed finish of the leather, and once the repair compound has been applied and allowed to dry there is no way to remove it from the surface. Also this kit is not intended for use on leather requiring heavy "pull strength" such as horse tack, belts, etc. By following these simple instructions you will make longlasting and cosmetically acceptable repairs to furniture and automotive upholstery, leather jackets and clothing, luggage, purses, golf bags and many other uses.

Step 1: Prep the area

The area must be clean of all dirt and oils. Use the Leather Prep provided to scrub the entire area. Wipe the area dry with a clean cloth or paper towel and wash the area a second time. This will ensure a clean surface. Wipe the area dry once again.

Once dry, lightly scuff the area with the sandpaper provided.

Do not use any other type of sandpaper!

this sandpaper is specially designed to be used in this application. Any other type of sandpaper may cause severe damage to the surface of the leather. Be very careful to sand only the exact area that you wish to apply repair compound. This is usually about 1/2" beyond the edges of the damaged area.



Step 2: Place Sub-patch into position

If making repairs to scratches or cracks only on the surface of the leather (not all the way through the leather), skip to step #4.

For holes, burns or cuts all the way through the leather, the following steps must be taken:



Cut a piece of sub-patch material (provided) at least 1/2" diameter larger than the hole. Using a pair of tweezers, push the sub-patch under the leather. Be certain that the sub-patch is **between** the leather and the foam padding. Also make sure that the sub-patch lies flat, no curled or raised edges, this will cause the sub-patch to become visible on the surface of the repaired area later as well as weaken the strength of the repair. Center the sub-patch material so that it is even in all directions around the hole.



Using the bottle of adhesive provided, place the nozzle between the sub-patch and the leather and squeeze out small amounts of adhesive. Be certain that all areas of the sub-patch are glued into place to the underside of the leather. Using light pressure with your hand from the top side of the leather, hold the two pieces together for several seconds until a tight bond is achieved. The foam padding underneath will provide sufficient resistance to accomplish this.



Step 3: Insert Leather Fill Patch

Cut a piece of the scrap leather (provided in the kit) to the same size and shape of the hole. Make certain that there are no overlapping areas that may cause a "high spot" to be formed. A piece of plain white paper and lead pencil may be used to shade the area of the hole. The shaded area may then be placed over the scrap leather and both pieces cut out simultaneously. This will form the insert to the exact shape of the hole to be filled. Place a small amount of the leather adhesive on to the visible area of the subpatch and spread evenly. Immediately place the cut piece of scrap leather onto the adhesive and lightly press and hold for several seconds. Lightly sand the area with the enclosed sandpaper to bring all surfaces even and smooth. It may be necessary to shave the insert by using a razor blade to remove any high areas from the surface that may still exist. Once this has been completed, clean the area once again to remove all particles and residue from the area and proceed to the next step.



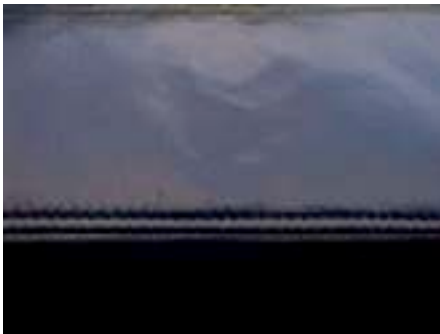
Step 4: Mix Color of Repair Compound



The repair compound comes in nine different colors and will need to be mixed in order to match the existing color of the leather you wish to repair. Color matching instructions are included in the kit. A small paper cup or other device is highly recommended for mixing purposes. Do not allow the repair compound to remain exposed to air for any extended length of time, this will allow the compound to begin to dry out and become unusable. So, be certain that you have made all necessary preparations before mixing the compound. Once mixed, any remaining compound that has not been used may be placed in a sealed container and kept for later use. For best color matching results, choose a work area with as much natural light as possible. Also keep in mind that the colors will darken as they dry, so the wet compound color will need to be made a bit lighter than the original color.

Step 5: Apply Repair Compound

Spreading of the repair compound is the most important step in making a quality repair. How the material is spread over the damaged area will determine the finished results. The compound must be spread, using the palette knife included, in a very smooth and even manner. **DO NOT TRY TO FILL THE DAMAGED AREA IN ONE COAT!** Several coats are recommended. The first coat should just fill in the damaged area. Once dry, the outline of the damage should still be visible. Allow the compound to dry thoroughly and then sand lightly to remove any uneven spots or ridges. Alcohol may also be used to gently scrub over the surface of the repair compound to remove any excess material and smooth the surface. Apply a second coat extending just beyond the edges of the first coat. Do not apply the compound in too large of an area, or too thick, you will want to concentrate only on an area no more than one inch larger than the damaged area. The drying time required for the compound will vary due to temperature, humidity and weather conditions. A hair drier may be used to speed up the drying time required. Light sanding between coats, or wiping with Alcohol is recommended. This step may be repeated as often as necessary to complete the repair. The final coat will not be sanded, however, it may be light wiped with Alcohol to remove any excess material or smooth the surface. The finish of the compound will become the finished product. **HINT:** When spreading the compound using the palette knife, keep the blade at a 25 to 30 degree angle. Begin the stroke slightly ahead of the area that you wish to place repair compound. With light, even pressure, drag the compound over the damaged area. Too much pressure on the blade will cause the compound to be pushed out (similar to bulldozer action), too little pressure will create heavy, distinctive edges where the compound stops. Don't worry, you will have sufficient time to get it right with a little practice.



Step 6: Finish out the repair

A quality leather conditioner is highly recommended for the care and treatment of leather. "Leather Magic" carries a complete line of leather care products. Contact us for more information.

For questions, help and additional information contact: info@leathermagic.com
Leather Magic 5. 2406143. 56
1/ . 2 Jccu mmb Bp Pnj Dcc81-800-232-4092
Monroe, NC 28110 704-296-5854 fax
Visit our web site at: <http://www.leathermagic.com>